



World Health Organization

Conference on rabies

10-11 December 2015

Oie

WORLD ORGANISATION FOR ANIMAL HEALTH



the time is
now!



In collaboration with



Food and Agriculture Organization of the United Nations

With the support of



GLOBAL ALLIANCE FOR RABIES CONTROL

Implementing One Health – Kenya's Experience

Dr Eric Osoro
Zoonotic Disease Unit
Kenya

www.ZDUKenya.org



Background

- Human population
 - 45 million projected)
- Livestock populations (2009 census)
 - Cattle 18 million
 - Sheep 18 million
 - Goats 28 million
 - Camels 3 million
- Wildlife
 - Rich in diversity and numbers



Key OH Steps

Formation of National Influenza Taskforce (NIT)

Jan 2006

ZTWG start quarterly meeting

Aug 2008

MOU between Vet and Health form ZDU

Aug 2011

ZDU office and 5-year OH Strategic Plan

Oct 2012

Dec 2006

Renaming of NIT to Zoonosis Technical Working Group (ZTWG)

Sept 2010

Workshop to discuss formation of OH Office

Mar 2012

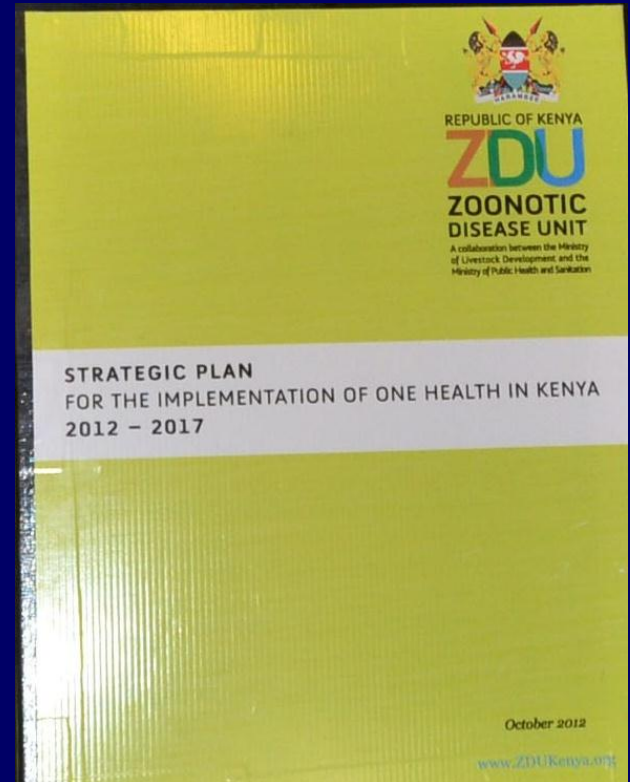
2 Epidemiologists from Vet and Health deployed to ZDU

Strategic Plan for Implementing OH in Kenya: Overview

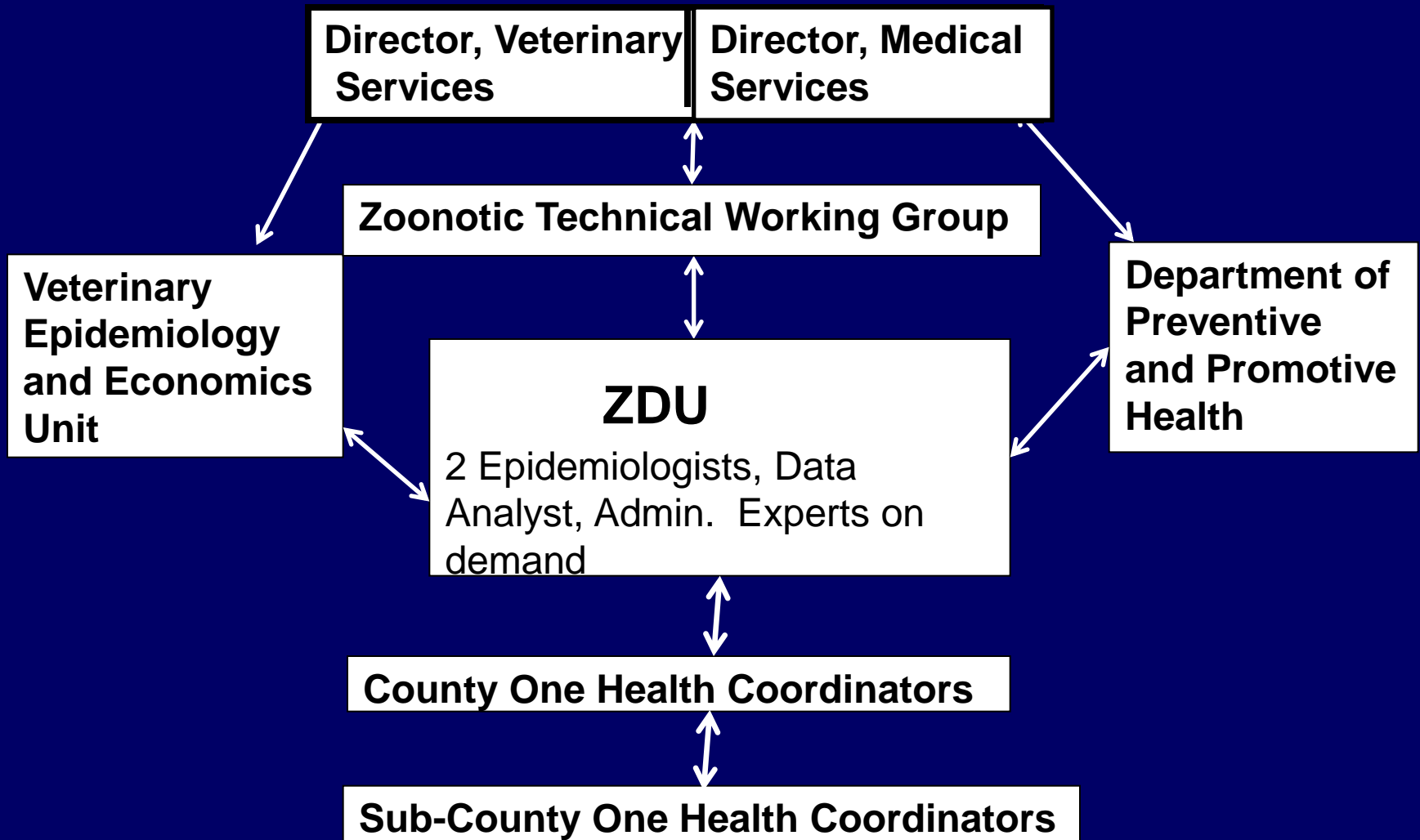
Objectives:

- Strengthen surveillance, prevention and control of zoonoses
- Establish structures and partnerships to promote OH
- Conduct and Promote Applied Research

To download visit www.ZDUKenya.org



ZDU Organogram

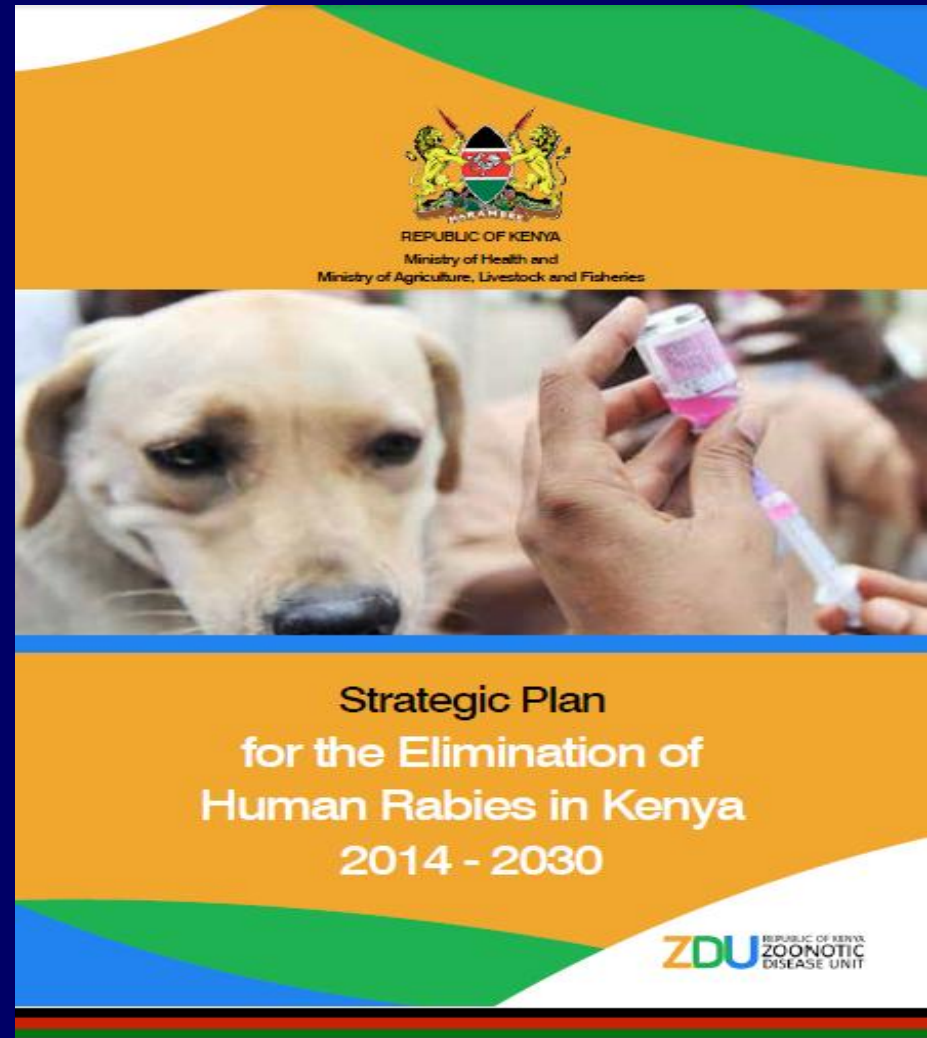


National Rabies Elimination Strategy: 2014-2030

Launched on the
World Rabies Day -
28th September,
2014

Available at

www.zdukenya.org



Timelines

Stages in the Rabies progressive control pathway

2030 -

STAGE 5

-Maintain freedom-from-rabies status in humans and dogs

2028 - 2029

STAGE 4

-Maintain freedom from dog-mediated human rabies
- Elimination of dog rabies

2017 - 2027

STAGE 3

Rabies risk reduction through full-scale implementation of the control strategy

2014 - 2019

STAGE 2

- Implementation of the National Rabies control strategy in pilot districts

2013 - 2014

STAGE 1

- Development and adoption of the National Rabies control strategy
- Preparation for its implementation

- 2013

STAGE 0

- Rabies suspected to be present
- Scanty information available

What exactly is OH APPROACH at a Local or National level?

1. Better coordination between human and animal health sectors (and environment)
2. Routinely sharing surveillance and outbreak data on zoonotic diseases
3. Develop integrated (human/animal) plans for preventing and controlling priority zoonotic diseases.
4. Recognize the importance of improving the capacity in animals for surveillance, prevention, and control of zoonotic diseases.
5. Research at the human-animal interface to understand the maintenance and transmission dynamics of zoonotic pathogens.