



**MINISTRY OF AGRICULTURE,  
NATURAL RESOURCES AND ENVIRONMENT**

**VETERINARY SERVICES**

**FOOT AND MOUTH  
and  
CLASSICAL SWINE FEVER  
DISEASES**

**CONTINGENCY PLAN  
FOR THE REPUBLIC OF CYPRUS**

This document sets out the Contingency Plan for Foot and Mouth and Classical Swine Fever diseases as drawn up in 2000 for the Republic of Cyprus.

<b>Section</b>	<b>Subject</b>
1.	Legal powers
2.	Financial provisions
3.	The chain of command
4.	The national disease control center
5.	Local disease control centers
6.	The expert group for FMD and CSF
7.	Resources
8.	Manuals of instruction
9.	Emergency vaccination
10.	Disease preparedness
11.	Epidemic scenarios
12.	Forms

## **SECTION 1            LEGAL POWERS**

The Animal(s) Health Law 109 (I) 2001	Annex VIII
Order Introducing measures for the control of Foot and Mouth Disease 197/2001 (Equivalent to EU Directive 85/511 EEC)	Annex IX
Order introducing measures for the control of Classical Swine Fever 252/2001 (Equivalent to EU Directive 80/217 EEC)	Annex X

## **SECTION 2            FINANCIAL PROVISIONS**

Finance is available an annual budgetary allocation to cover the costs, beyond the normal running costs of the Veterinary Services, of controlling whatever disease outbreaks may occur.

### **1.1.    Personnel**

The cost of staff employed by the Ministry of Agriculture (Veterinarians, lay support Staff in the Field, Office Staff) are covered by money voted to the Department each year.

### **1.2.    Small Equipment and Consumable Items**

The powers are available for these costs to be met within the budgetary provisions of Veterinary Services.

### **1.3.    Slaughter, Destruction of Carcasses and Contaminated Material, Sanitation**

The powers are available for these costs to be met within the budgetary provisions of the Veterinary Services.

### **1.4.    Compensation Payment**

The powers are available for these costs to be met within the budgetary provisions of the Veterinary Services - Law 109 (I) 2001 article 11 (f). Indemnities for the 100% of the animal **reproductive** value (which covers a part of loss of income) or material and equipment destroyed are paid to the farmers.

### **1.5.    Emergency Vaccination**

The powers are available for these costs to be met within the budgetary provisions of the Veterinary Services.

### **1.6.    Disease Preparedness**

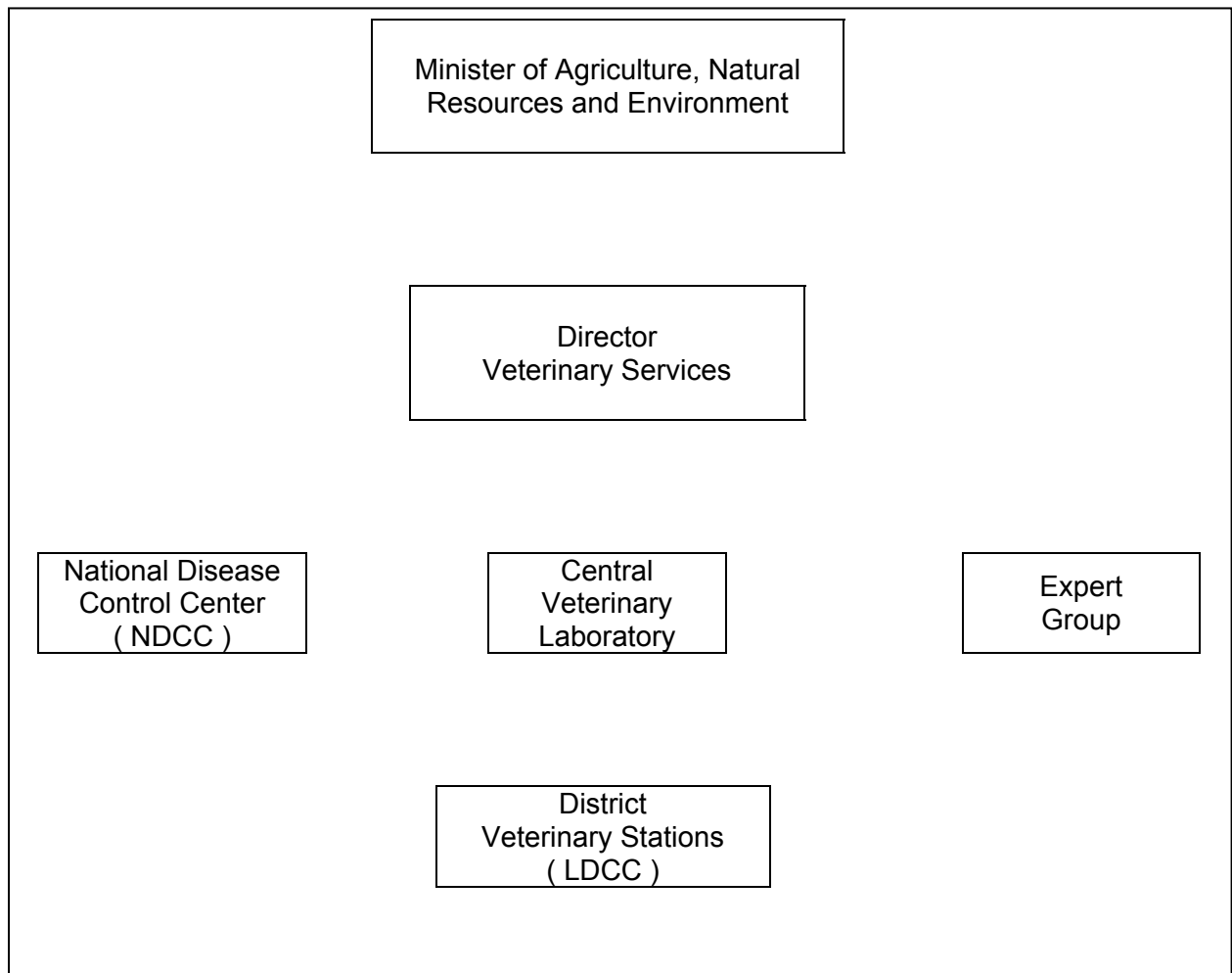
The powers are available for these costs to be met within the budgetary provisions of the Veterinary Services.

### SECTION III THE CHAIN OF COMMAND

- 3.1. Responsibility for the control of Foot and Mouth Disease (FMD) and Classical Swine Fever (CSF) rests with the Minister of Agriculture, Natural Resources and Environment who delegates the direction of control strategies to the Director of the Veterinary Services (D.V.S).
- 3.2. The D.V.S. has delegated contingency planning for FMD and CSF to the officer in charge of the National Disease Control Centre (N.D.C.C.) (name and address of the centre at Annex 1.)

In the event of an outbreak of disease the N.D.C.C. will co-ordinate the national strategy under the overall direction of the D.V.S.

The District Veterinary Officers at the District Veterinary Stations which act as Local Disease Control Centre (L.D.C.C.) are responsible for FMD and CSF control (infected premises and restrictions in their territory).



## **SECTION 4 THE NATIONAL DISEASE CONTROL CENTRE (N.D.C.C.)**

4.1. The Director of Veterinary Services (DVS) with the support of the National Disease Control Centre (NDCC) is responsible for:

Direction of Local Disease Control Centre (LDCCs)

Liaison with Diagnostic Laboratories

Arranging financial provisions for the Contingency Plan

Arranging training programmes and nominating personnel for Community Training Programmes

Arranging disease awareness campaigns

Directing the national strategy in the event of an outbreak of disease

Deployment of staff and other resources to Local Disease Control Centres (LDCCs)

Determination of protection and surveillance zones

Deciding on the closure of entry points if necessary

Sanctioning the release of vaccine and determination of vaccination zones

Negotiating emergency financial provisions to cover the cost associated with an Epidemic

Liaison with agricultural trading bodies, the media and reports to OIE

Liaison with European Commission

Liaison with neighboring countries

4.2. The NDCC is equipped with the facilities of the Animal Health and Welfare Division of the Department of Veterinary Services in Nicosia.

These equipment are the following:

Means of communication including telephones both static and mobile and fax.

Computers linked to the Local Disease Control Centers, the Diagnostic Laboratories and the other important centers.

A computerized or, failing that, a paper system for herd identification and animal location.

Printers for the computers

Photocopiers

Maps of 1:50,000 and 1:10,000 scale

A file containing other information, in addition to what is accessible through the computer network, which will be useful in directing control measures.

A list of national and international organizations, such as slaughterhouses, livestock markets, breeding associations, farming organizations and all centers, that would be affected by a disease outbreak and would have to be notified if Foot and Mouth Disease or Classical Swine Fever were confirmed.

An up date list of staff, within and outside service, who could be called on to give assistance in a disease emergency, with details of their training and experience in control List A diseases and their ability to communicate in more than one Community language.

The National Disease Control Centre is staffed by:-

2 Veterinarians

4 Support Staff

In the event of a disease outbreak staff will be supplemented.

The center can be contacted 24 hours a day (see Annex I)

## **SECTION 5            LOCAL DISEASE CONTROL CENTERS (LDCC's)**

5.1. FMD and CSF preparedness and control at the local level is the responsibility of the District Veterinary Officer (DVO) who acts inter alia as the Local Disease Control Center (LDCC). Each center is in charge of a Senior Veterinarian who is responsible through the Director of Veterinary Services. There are five (5) LDCC's. The list of Centers and a map showing the area covered by each, as at Annex II.

5.2. In the event of an outbreak the DDVS may decide to set up a temporary LDCC in the location of the disease outbreak.

5.3. The LDCC's are provided with similar equipment to the NDCC (Section 4.2.) which will include at least the following:-

Means of communication including telephones, both static and mobile, and fax.

Computers linked to the Veterinary Service network and capable of communicating by e-mail.

A computerized or, failing that, a paper system for herd identification and animal location including details of holdings with large numbers of stock or which for other reasons are considered to be at particular risk.

Printers for the computers.

Photocopier.

Maps of 1:50,000 for the surveillance zone and 1:10,000 scale for the protection zone.

Files containing other information, in addition to what are accessible through the computer network, which will be useful in directing control measures.

An up-to-date list of organizations and persons in the area covered by the LDCC who would be affected by a disease outbreak and who will have to be notified if Foot and Mouth Disease or Classical Swine Fever is confirmed.

Mobile phones (1 - 2) for the field staff.



Additionally the LDCC's can be supplemented as necessary from the central store at the NDCC. A list of the form and notices used by the centers is at Annex III. In the LDCC's store are dispensable all equipment necessary for killing of animals, dispose of carcasses and sanitation procedures.

5.4. The responsibility of the LDCC's includes:

Maintaining disease awareness and preparedness within its territory.

Conducting disease awareness campaigns.

Conducting and participating in disease preparedness exercises.

Maintaining a link with the Central Veterinary Laboratory regarding the submission and transport of specimens.

Maintaining links with the police, local authorities, agricultural and trading authorities, markets, abattoirs, carcasses disposal plants, animal feed suppliers hunting and shooting organizations, milk organization, and private Veterinarians.

Directing and implementing the local control strategy in the event of a disease outbreak.

Arranging the epidemiological investigations in liaison with the FMD and CSF expert groups and transport of specimens to diagnostic laboratories.

Liaison with the National disease control center to determine the extent of the protection and surveillance zone.

Closing border entry points if necessary.

Liaison with the police to isolate infected premises and to arrange movement controls and closure of markets.

Supervising quarantine and all procedures at infected premises including valuation, slaughter and disposal of infected and contact animals.

Disinfection and cleansing of infected premises and elsewhere in protection / surveillance zones.

Arranging compensation to livestock owners.

Inspection of livestock units in protection/surveillance zone. Standing instructions that all farms and livestock premises in the protection zone will be visited. All premises in the surveillance zone, which are considered to present a particular risk, will be visited in accordance with the recommendations of the expert group.

In the event of emergency vaccination the deployment of the vaccinators.

- 5.5. Other authorities will also have responsibilities in the event of an outbreak.

The Police - assisting with the security of infected premises, and, movement restrictions. The veterinary authority is legally empowered to demand the aid of the police.

The Local Authority - joint responsibilities for maintaining the protection and surveillance zones.

- 5.6. District Veterinary Stations which serve as Local Disease Control Centers are normally staffed by:

3-5 veterinarians  
3-5 veterinary support staff  
3 office support staff

The officer in charge is a veterinarian. In the event of a disease outbreak the head of the center can call for other staff in liaison with veterinary headquarter. Staff is always on call to deal with disease emergencies.

- 5.7. The Local Disease Control Center will provide support for the FMD and CSF expert group in carrying out their investigations and will liaise with the group to determine the Local Disease Control Strategy.

## **SECTION 6            THE EXPERT GROUP (E.G.) FOR FMD & CSF**

- 6.1.    An Expert Group has been established and, although its members have other duties, the E.G is permanently operational. The E.G has (Annex IV) a permanent membership, which can be enlarged if the situation so demands in a time of crisis.
  
- 6.2.    For further qualification one veterinarian from the E.G visited and worked in Grate Britain during the F.M outbreak. An other veterinarian will be specialized on CSF epidemiology in the near future.
  
- 6.3.    On his return to Cyprus the veterinarian who visited Grate Britain has trained other veterinarians on the same aspect. The intention is to have at least one veterinarian trained in epidemiology in each D.V.O.
  
- 6.4.    As soon as a report of suspected F.M.D or CSF is made, the E.G will be immediately mobilized and will become involved by having access to preliminary reports from the field enquiry and may be by visiting the area.
  
- 6.5.    The E.G members will contact training courses as directed by the National Disease Control Center (See Section 10).

## **SECTION 7            RESOURCES**

### **7.1.    Personal Resources**

The National Disease Control Center maintains a list of staff that can be called on in the event of an outbreak of F.M.D or Classical Swine Fever (C.S.F). The number of staff, the number trained (or with experience of F.M.D and C.S.F control) another number able to operate in the field using another Community language is listed in Annex V.

In addition to these personnel the N.D.C.C has negotiated stand-by arrangements for 25 Veterinarians who are employed by the Government in the National Animal Health Scheme.

It is estimated that the staff numbers given in Annex V are sufficient to provide personnel for all outbreaks and the associated Protection and Surveillance Zones, in a "worst case" scenario.

We estimate, that the number of staff in each L.D.C.C can be expanded as the situation demands.

### **7.2.    Diagnostic Laboratories**

Central Veterinary Laboratories  
Veterinary Services  
1417 Nicosia  
CYPRUS

At present the Laboratory is capable to carry out serological tests for antigen and antibody detections, for F.M.D and CSF

The Veterinary Services of Cyprus has already nominated and signed contracts with reference Laboratories in Member States for carrying out F.M.D and C.S.F Virus manipulation diagnostics.

For Foot and Mouth Disease:

- (a) Istituto Zooprofilattico Sperimentale  
Della Lombardia  
e dell'Emilia - Romagna  
Brescia  
Italy

- (b) Institute of Infectious and Parasitic Diseases (Virology)  
9 Neapoleos Street  
Agia Paraskevi  
Attiki  
Greece

For Classical Swine Fever:

- (a) Institut für Virologie  
der Tierärztlichen Hochschule  
Dischhofsholer Damm 151  
D-300 Hannover I  
Germany
- (b) Institute of Infectious and Parasitic Diseases (Virology)  
9 Neapoleos Street  
Agia Paraskevi  
Attiki  
Greece

### 7.3. Equipment and Facilities

List of equipment held in stock for the contingency plans is shown in the manual of instructions.

List of equipment and facilities which are available at very short notice through standing agreements and contracts is shown in the manual of instructions

## **SECTION 8            MANUALS OF INSTRUCTION**

1.     Staff Manual of Instructions for Foot Mouth Disease
2.     Staff Manual of Instruction for Classical Swine Fever

## **SECTION 9            EMERGENCY VACCINATION**

No bank of concentrated FMD or CSF antigen is held.

Efforts are made Cyprus to be connected with the European Union Vaccines Bank.



## **SECTION 10      DISEASE PREPAREDNESS**

### **10.1.    Training Programmes**

Two Veterinarians have to be nominated to attend Community based F.M.D and C.S.F training courses when these are established.

Two Veterinarians already participated on the F.M.D exercise granted in Brno, Czech Republic on May 2001

Analytical explanation of the manual of instructions and 'exercise on the map' was organized on October 2001 in Vet. Services followed by the potential involved parties

Training for all other members of staff are as follows:

One day seminars on F.M & C.S. F diseases and on manuals of instructions as well were organized in all the D.V.Os (L.D.C.Cs) during May – July 2001

All veterinarians joining the Veterinary Services are given instruction on F.M.D and C.S.F diagnosis and control. The details are given in Annex VI.

All veterinarians in the service undergo a refresher-training programme as detailed at Annex VI.

Training for lay personnel who will participate in field aspects on F.M.D and C.S.F control and for office personnel who will staff Local Disease Control center is undertaken at local level. (Details Annex VI).

The National Disease Control Centers and the Local Disease Control Centers staff undergo regular refresher training via a simulated F.M.D and C.S.F outbreak exercise.

### **10.2.    Publicity and Disease Awareness**

Lectures / demonstration are held at the Department of Veterinary Services in Nicosia.

The necessary contacts are available to increase the awareness of the farming community and other organizations as necessary.

Articles in the farming press (Agrotis, veterinary news magazines, farmer's agriculture magazines, radio and television relative programmes, daily press). The Veterinary Services web site is being prepared and soon could be visited.

## **SECTION 11      EPIDEMIC SCENARIOS**

For the purposes of this contingency plan epidemic scenarios ranging from the simplest to the most complex have been created. Assessment of the financial, physical and human resources to operate a FM and CSF control and eradication campaign has been considered.

Simulated exercises shall be organized according to the above scenarios.

## **SECTION 12      FORMS**

Forms and other documents specifically for use in dealing with FMD and CSF have been prepared. In each case the relevant parts of the legislation are quoted and the conditions applying to notices or authorizations are listed in Annex III.

## **ANNEXES**

- I. National Disease Control Center
- II. Local Disease Control Centers
  - (a) List of locations
  - (b) Map showing territory covered
- III. List of forms and notices
- IV. Expert Groups
- V. Personnel Resources
  - Number of staff available
  - Number of veterinarians trained/experienced in FMD control
  - Number of veterinarians able to work in another Community language
- VI. Training Courses - Outlines
- VII. Standing Instructions A and B (Manuals of instructions)
- VIII. The Animal(s) Health Law 109 (I) 2001
- IX. Order Introducing Measures for the Control of Foot and Mouth Disease 197/2001
- X. Order Introducing Measures for the Control of Classical Swine Fever 252/2001

## **ANNEX I**

### **National Disease Control Center**

Ministry of Agriculture, Natural Resources and Environment  
Veterinary Services  
1417 Nicosia  
Cyprus

Animal Health and Welfare Division

Head of Centre: Dr. Giorgos Neophytou, Principal Veterinary Officer

E-mail: [cy.animo@cytanet.com.cy](mailto:cy.animo@cytanet.com.cy)

Telephone Number:       22 805250 (off.)  
                                  22 751919 (res.)

Fax no: 22 805176

## **ANNEX II**

### **Local Disease Control Centers and Map**

1. Nicosia District Veterinary Station  
1417 Nicosia  
D.V.O.: Dr. A. Hadjikostis  
Tel.no.: 22 805240  
Mobile: 99 628845  
Fax no.: 22 805174
  
2. Lemesos District Veterinary Station  
3042 Limassol  
D.V.O.:Dr. I. Ioannou  
Tel.no.: 25 305195  
Mobile: 99 628843  
Fax no.: 25 305256
  
3. Ammochostos District Veterinary Station  
7530 Ormedia  
D.V.O.: Dr. Ch. Theodorou  
Tel.no.: 24 721571  
Mobile: 99 518271  
Fax no.: 24 722811
  
4. Larnaca District Veterinary Station  
1417 Nicosia  
D.V.O.: Dr. S. Yiallourous  
Tel.no.: 24 304275  
Mobile: 99 654994  
Fax no.: 24 304270
  
5. Paphos District Veterinary Station  
8100 Paphos  
D.V.O.: Dr. St. Leonidou  
Tel.no.: 26 306269  
Mobile: 99 419471  
Fax no.: 26 306198

MAPS: Available

## **ANNEX III**

### **List of Forms and Notices**

- CSF / FM 1a: Notice Declaring Infected Holding
- CSF / FM 1b: Notice Imposing Emergency Restrictions
- CSF / FM 2: List of Susceptible Animals in Infected Holding
- CSF / FM 3: Extension of Emergency Restrictions
- CSF / FM 4: License for Movement of Animals in Area to which Restrictions Apply
- CSF / FM 5: Veterinary Officer's Preliminary Report
- CSF / FM 6: Classical Swine Fever / Foot and Mouth / Swine Vesicular Disease, Telephone Report
- CSF / FM 7a: Withdrawal of Notice Declaring Infected Holding
- CSF / FM 7b: Withdrawal of Emergency Restrictions
- CSF / FM 8: Submission of diagnostic samples to CVL
- CSF / FM 9: Submission of Diagnostic Samples to reference Laboratory
- CSF / FM 10: Animal Disease Notification (ADNS)
- CSF / FM 11: Notice to Owner or Person in Charge of Animals Exposed to Infection or to Occupier of Premises where such Animals are Situated, Imposing Restrictions
- CSF / FM 12: To the Occupier of an Infected Farm
- CSF / FM 13: Letter to all Veterinary Surgeons in the Protection and Surveillance Zones
- CSF / FM 14: License for Persons to Enter or Leave an Infected Holding
- CSF / FM 15: Statement of Animals Killed

- CSF / FM 16: Poster: Notice to General Public in Protection and Surveillance Zones
- CSF / FM 17: Enlighting Leaflet
- CSF / FM 18: Instructions to farmer in the infected area
- CSF / FM 19: License for the Movement of Animals through Protection Zone
- CSF / FM 20: Proforma for Receiving of Suspected Disease
- CSF / FM 21: Notice Confirming the Present of CSF / FMD
- CSF / FM 22: Notice of Intention to Kill Susceptible Animals and Seizure for Destruction of Animal Products or other Material Believed to be Contaminated
- CSF / FM 23: Form for the Valuation of Susceptible Animals
- CSF / FM 24: Form Confirming Killing of Susceptible Animals and Disposal of the Carcasses
- CSF / FM 25A Form for the Valuation of Seized Animal Products and other Materials
- CSF / FM 25B Certificate for Destruction of Animal Products and other Materials
- CSF / FM 26: Notice Imposing Protection Zone Controls
- CSF / FM 27: Notice Imposing Surveillance Zone Controls
- CSF / FM 28: Letter to Farmers in the Protection Zone Explaining the Controls
- CSF / FM 29: Letter to for Farmers in the Surveillance Zone Explaining the Controls
- CSF / FM 30: FMD, SVD Tracing Request Form
- CSF / FM 31: Form of the Epidemiological Enquiry
- CSF / FM 32: Certificate of Satisfactory Completion of Cleaning and Disinfection on an Infected Holding
- CSF / FM 33: Outbreak History Sheet



Forms used for the vaccination procedures:

CSF / FMV 1

CSF / FMV 2

CSF / FMV 3

CSF / FMV 4

CSF / FMV 5

CSF / FMV 6

## **ANNEX IV**

### I. The Expert Group for Food & Mouth disease

Dr. Andreas Papaefstathiou  
Dr. Ramon Papadopoulos  
Dr. Kyriacos Georgiou

### II. The Expert Group for Classical Swine Fever

Dr. Phedias Loucaides  
Dr. Ch. Theodorou  
Dr. Kyriacos Georgiou

## ANNEX V

### Personnel Resources

**1. Number of Staff who can be called upon in the event of an F.M.D and C.S.F outbreak**

All 260 staff in the Government Veterinary Services (Veterinarians, Technicians and Administrative Staff) is trained in certain aspects at MFD and CSF Control and in the worst case scenario could be called up on.

There is an agreement with the Game and Wild Life Services that 10 members of this Department will help in killing infected animals

**2. Number of Veterinarians Trained / Experienced in F.M.D and C.S.F Control**

All Veterinary Staff are trained and have seen clinical foot and mouth disease and Classical Swine Fever as part of their training. Because of the length of time, which has elapsed since the last outbreak of F.M.D and C.S.F in Cyprus, few have had the experience of a live outbreak.

**3. Number of staff able to operate in the field using another community language**

There is 200 staff from the Veterinary and Technical grades who are fluent in at least one Community Language but there are others who are less able but could get by.

The Languages are:

English  
German  
Portugal  
French

## **ANNEX VI**

### **Training courses - Outlines**

#### **1. Veterinary Officer Background Course**

A two weeks course for all new-entrant Veterinary Officers divided between the Central Veterinary Laboratory and the NDCC.

#### **2. Epidemiology Courses**

The staff of the LDCC's and other selected individuals attend an epidemiology course held at the Central Veterinary Laboratory and NDCC at Nicosia.

Courses are held as required to ensure adequate numbers of trained people in all parts of the country.