

REPUBLIC  OF CYPRUS

MINISTRY OF AGRICULTURE, NATURAL
RESOURCES AND ENVIRONMENT

VETERINARY SERVICES
NICOSIA

**TRANSMISSIBLE SPONGIFORM
ENCEPHALOPATHIES OF ANIMALS**

**CONTINGENCY PLAN
FOR CYPRUS**



This document sets out the Contingency Plan for Transmissible Spongiform Encephalopathies of animals as drawn up in 2001 for the country of Cyprus.

Section	Subject
1.	Legal powers
2.	Financial provisions
3.	The chain of command
4.	The national disease control center
5.	Local disease control centers
6.	The expert group for TSE
7.	Resources
8.	Manuals of instruction
9.	Emergency vaccination
10.	Disease preparedness
11.	Epidemic scenarios
12.	Forms

SECTION 1 LEGAL POWERS

The Animal(s) Health Law 109/2001
Annex VIII

Order for the Control of TSE (334/2002) (Equivalent to EU Regulation
999/2001 Annex IX

SECTION 2 FINANCIAL PROVISIONS

Finance is available an annual budgetary allocation to cover the costs, beyond the normal running costs of the Veterinary Services, of controlling whatever disease outbreaks may occur.

2.1. Personnel

The cost of staff employed by the Ministry of Agriculture (Veterinarians, lay support Staff in the Field, Office Staff) are covered by money voted to the Department.

2.2. Small Equipment and Consumable Items

The powers are available for these costs to be met within the budgetary provisions of the Veterinary Services.

2.3. Slaughter, Destruction of Carcasses and Contaminated Material, Sanitation

The powers are available for these costs to be met within the budgetary provisions of the Veterinary Services.

2.4. Compensation Payment

The powers are available for these costs to be met within the budgetary provisions of the Veterinary Services - (Law 109(I)2001 article 11(F). Indemnities for the 100% of the animal **reproductive** value (which covers a part of loss of income) or material and equipment destroyed are paid to the farmers.

2.5. Disease Preparedness

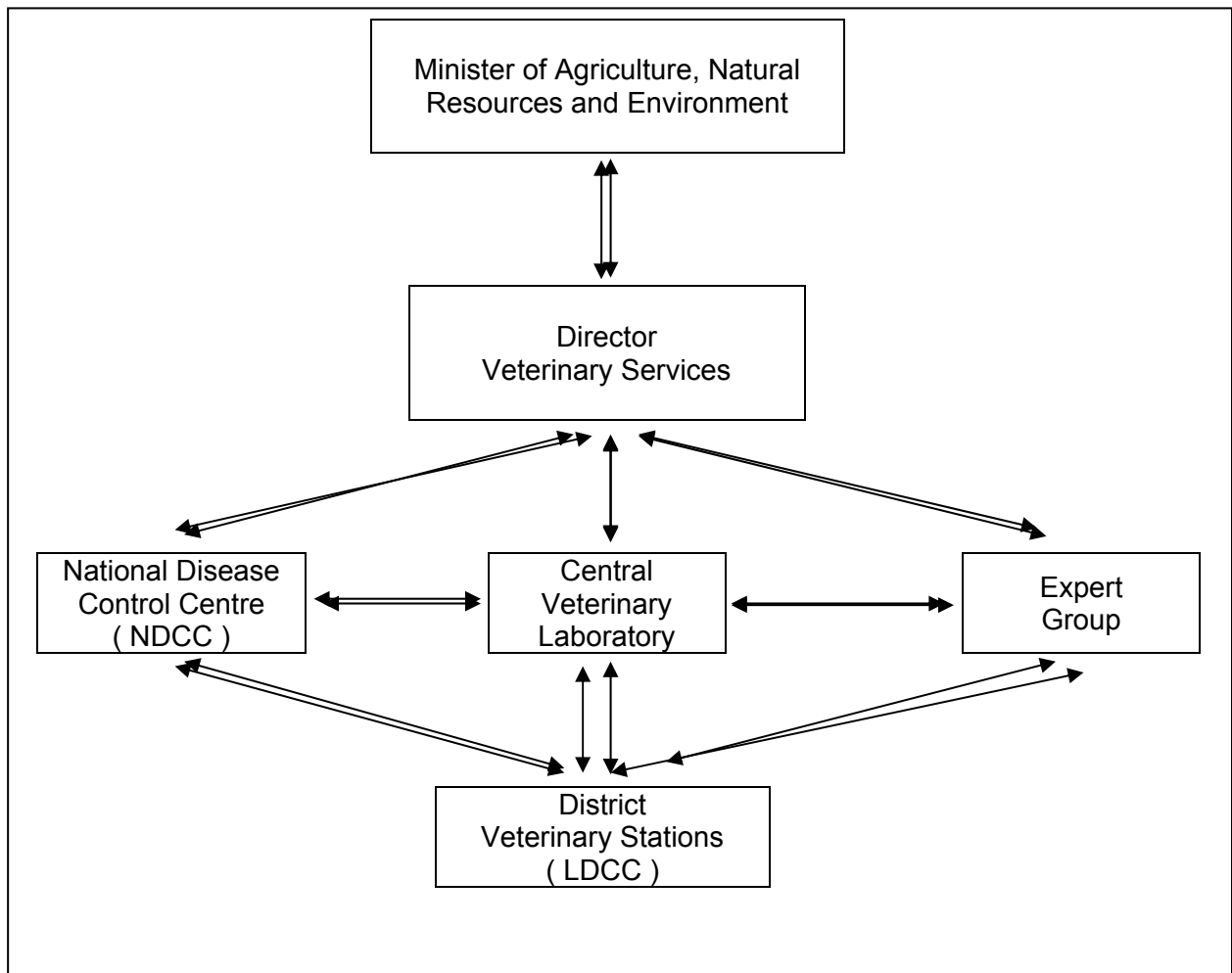
The powers are available for these costs to be met within the budgetary provisions of the Veterinary Services.

SECTION 3 THE CHAIN OF COMMAND

- 3.1. Responsibility for the control of TSE rests with the Minister of Agricultural Resources and Environment who delegates the direction of control strategies to the Director of the Veterinary Services (D.V.S).
- 3.2. The D.V.S. has delegated contingency planning for TSE to the officer in charge of the National Disease Control Centre (N.D.C.C.) (name and address of the centre at Annex 1.)

In the event of an outbreak of disease the N.D.C.C. will co-ordinate the national strategy under the overall direction of the D.V.S.

The District Veterinary Officers at the District Veterinary Stations which act as Local Disease Control Centre (L.D.C.C.) are responsible for TSE control (infected premises and restrictions in their territory).



SECTION 4 THE NATIONAL DISEASE CONTROL CENTRE (N.D.C.C.)

4.1. The Director of Veterinary Services (DVS) with the support of the National Disease Control Centre (NDCC) is responsible for:

- Direction of Local Disease Control Centre (LDCCs)
- Liaison with Diagnostic Laboratories
- Arranging financial provisions for the Contingency Plan
- Arranging training programmes and nominating personnel for Community Training Programmes
- Arranging disease awareness campaigns
- Directing the national strategy in the event of an outbreak of disease
- Deployment of staff and other resources to Local Disease Control Centres (LDCCs)
- Negotiating emergency financial provisions to cover the cost associated with the TSE diseases
- Liaison with agricultural trading bodies, the media and reports to OIE
- Liaison with European Commission
- Liaison with neighbour countries

4.2. The NDCC is equipped with the facilities of the Animal Health and Welfare Division of the Veterinary Services in Nicosia.

These equipment are the following:

- Means of communication including telephones both static and mobile and fax.
- Computers linked to the Local Disease Control Centres, the Diagnostic Laboratories and the other important centres.
- A computerised or, failing that, a paper system for herd identification and animal location .
- Printers for the computers

- Photocopiers
- Maps of 1:50,000 and 1:10,000 scale
- Files containing other information, in addition to what is accessible through the computer network, that will be useful in directing control measures.
- A list of national and international organisations, such as slaughterhouses, livestock markets, breeding associations, farming organisations and all centres, that would be affected by a disease outbreak and would have to be notified if TSE diseases was confirmed.
- An up date list of staff, within and outside service, who could be called on to give assistance in a disease emergency, with details of their training and experience in control List A diseases and their ability to communicate in more than one Community language.

4.3 The National Disease Control Centre is staffed by:-

2 Veterinarians

4 Support Staff

In the event of a disease outbreak staff will be supplemented.

The centre can be contacted 24 hours a day (see Annex I)

SECTION 5 LOCAL DISEASE CONTROL CENTRES (LDCC's)

- 5.1. TSE diseases preparedness and control at the local level is the responsibility of the District Veterinary Officer (DVO) who acts inter alia as the Local Disease Control Centre (LDCC). Each centre is in charge of a Senior Veterinarian who is responsible through the Director of Veterinary Services. There are five (5) LDCC's. The list of Centres and a map showing the area covered by each, as at Annex II.
- 5.2. In the event of an outbreak the DVS may decide to set up a temporary LDCC in the location of the disease outbreak.
- 5.3. The LDCC's are provided with similar equipment to the NDCC (Section 4.2.) which will include at least the following:-
- Means of communication including telephones, both static and mobile, and fax
 - Computers linked to the Veterinary Service network and capable of communicating by e-mail.
 - A computerised or, failing that, a paper system for herd identification and animal location including details of holdings with large numbers of stock or which for other reasons are considered to be at particular risk.
 - Printers for the computers.
 - Photocopier.
 - Maps of 1:50,000 and 1:10,000 scale.
 - Files containing other information, in addition to what are accessible through the computer network, which will be useful in directing control measures.
 - An up-to-date list of organisations and persons in the area covered by the LDCC who would be affected by a disease outbreak and who will have to be notified if TSE is confirmed.
 - Mobile phones (1 - 2) for the field staff.

Additionally the LDCC's can be supplemented as necessary from the central store at the NDCC. A list of the forms and notices used by the centres is at Annex III. In the LDCC's store are dispensable all equipment necessary for killing of animals, dispose of carcasses and sanitation procedures.

5.4. The responsibility of the LDCC's includes:

- Maintaining disease awareness and preparedness within its territory.
- Conducting disease awareness campaigns.
- Conducting and participating in disease preparedness exercises.
- Maintaining a link with the Central Veterinary Laboratory regarding the submission and transport of specimens.
- Maintaining links with the police, local authorities, agricultural and trading authorities, markets, abattoirs, carcase disposal plants, animal feed suppliers, milk organisation, and private Veterinarians.
- Directing and implementing the local control strategy in the event of a disease outbreak.
- Arranging the epidemiological investigations in liaison with the TSE diseases expert group and transport of specimens to diagnostic laboratories.
- Liaison with the police to isolate infected premises and to arrange movement controls.
- Arranging compensation to livestock owners.

5.5. Other authorities will also have responsibilities in the event of an outbreak.

The veterinary authority is legally empowered to demand the aid of the police.

The Local Authority

5.6. District Veterinary Stations which serve as Local Disease Control Centres are normally staffed by:

3-5 veterinarians
3-5 veterinary support staff
3 office support staff

The officer in charge is a veterinarian. In the event of a disease outbreak the head of the centre can call for other staff in liaison with veterinary headquarter. Staff are always on call to deal with disease emergencies.

- 5.7. The Local Disease Control Centre will provide support for TSE diseases expert group in carrying out their investigations and will liaise with the group to determine the Local Disease Control Strategy.

SECTION 6 THE EXPERT GROUP (E.G.) FOR TSE

- 6.1. An Expert Group has been established and, although its members have other duties, the E.G is permanently operational. The E.G has (Annex IV) a permanent membership, which can be enlarged if the situation so demands in a time of crisis.

- 6.2. Two veterinarians are specialized on the TSE epidemiology

- 6.3. The above two veterinarians have to train other veterinarians on the same aspect. The intention is to have at least one veterinarian trained in epidemiology in each D.V.O.

- 6.4. As soon as a report of suspected TSE diseases is made, the E.G will be immediately mobilized and will become involved by having access to preliminary reports from the field enquiry and may be by visiting the area.

- 6.5. The E.G members will contact training courses as directed by the National Disease Control Center (See Section 10).

SECTION 7 RESOURCES

7.1. Personal Resources

The National Disease Control Center maintains a list of staff who can be called on in the event of an outbreak of TSE diseases. The number of staff, the number trained, another number able to operate in the field using another Community language are listed in Annex V.

In addition to these personnel the N.D.C.C has negotiated stand-by arrangements for 25 Veterinarians who are contracted with the Government in the National Animal Health Scheme.

We estimate, that the number of staff in each L.D.C.C can be expanded as the situation demands.

7.2. Diagnostic Laboratories

Central Veterinary Laboratories
Veterinary Services
1417 Nicosia
CYPRUS

The Veterinary Services of Cyprus is cooperated with the reference laboratory in Greece

Εργαστήριο Μικροβιολογίας και Λοιμωδών Νοσημάτων
Τμήμα Κτηνιατρικής Α.Π.Θ
GR-54006 Πανεπιστημιούπολη
ΘΕΣΣΑΛΟΝΙΚΗ - ΕΛΛΑΔΑ

7.3. Equipment and Facilities

List of equipment held in stock for the contingency plans is shown in the manual of instructions.

List of equipment and facilities which are available at very short notice through standing agreements and contracts is shown in the manual of instructions

SECTION 8 MANUALS OF INSTRUCTION

1. Staff Manual of Instructions for BSE (ANNEX VII A)
2. Staff Manual of Instruction for Scrapie.(ANNEX VII B)

SECTION 9 EMERGENCY VACCINATION

Vaccination is not applicable to these diseases.

SECTION 10 DISEASE PREPAREDNESS

10.1. Training Programmes

Two Veterinarians have to be nominated to attend Community based TSE training courses when these are established.

Training for all other members of staff are as follows:

- All veterinarians joining the Veterinary Services are given instruction in TSE diseases diagnosis and control. The details are given in Annex VI.
- All veterinarians in the service undergo a refresher-training programme as detailed at Annex VI.
- Training for lay personnel who will participate in field aspects on TSE disease control and for office personnel who will staff Local Disease Control centre is undertaken at local level. (Details Annex VI).
- The National Disease Control Centres and the Local Disease Control Centres staff undergo regular refresher training via seminars, lectures and a simulated TSE outbreak exercise.

10.2. Publicity and Disease Awareness

Lectures / demonstration are held at the Veterinary Services in Nicosia.

The necessary contacts are available to increase the awareness of the farming community and other organisations as necessary.

Articles in the farming press (Agrotis, veterinary news magazines, farmer's agriculture magazines, radio and television relative programmes, daily press). The Veterinary Services web site is being prepared and soon could be visited.

SECTION 11 EPIDEMIC SCENARIOS

For the purposes of this contingency plan epidemic scenarios have been created. Assessment of the financial, physical and human resources to operate TSE control and eradication campaign has been considered.

Simulated exercises shall be organized according to the above scenarios.

SECTION 12 FORMS

Forms and other documents specifically for use in dealing with TSE disease have been prepared. In each case the relevant parts of the legislation are quoted and the conditions applying to notices or authorisations are listed in Annex III.

ANNEXES

- I. National Disease Control Centre
- II. Local Disease Control Centres
 - (a) List of locations
 - (b) Map showing territory covered
- III. List of forms and notices
- IV. Expert Groups
- V. Personnel Resources
 - Number of staff available
 - Number of veterinarians trained/experienced in TSE control
 - Number of veterinarians able to work in another Community language
- VI. Training Courses - Outlines
- VII. Staff Manual of Instructions A and B
- VIII. The Animal(s) Health Law 109(I) 2001
- IX. Order Introducing Measures for the Control of TSE

ANNEX I

National Disease Control Centre

Ministry of Agriculture, Natural Resources and Environment
Veterinary Services
1417 Nicosia
Cyprus

Animal Health and Welfare Division

Head of the Centre: Dr. Giorgos Neophytou, Principal Veterinary Officer

E-mail: CY_animo@cytanet.com.cy

Telephone Number: 22805250 (off.)
22751919 (res.)

FAX No. 22805176

ANNEX II

Local Disease Control Centres and Maps

1. Nicosia District Veterinary Station
1417 Nicosia
D.V.O.: Dr. A. Hadjikostis
Tel.no.: 22 805240
Mobile: 99 628845
Fax no.: 22332803

2. Lemesos District Veterinary Station
3042 Limassol
D.V.O.:Dr. I. Ioannou
Tel.no.: 25305195
Mobile: 99628843
Fax no.: 25305256

3. Ammochostos District Veterinary Station
7530 Ormedia
D.V.O.: Dr. Ch. Theodorou
Tel.no.: 24721571
Mobile: 99654994
Fax no.: 24722811

4. Larnaca District Veterinary Station
1417 Larnaca
D.V.O.: Dr. S. Yiallouros
Tel.no.: 24304275
Mobile: 99628841
Fax no.: 24304675

5. Paphos District Veterinary Station
8100 Paphos
D.V.O.: Dr. St. Leonidou
Tel.no.: 26306269
Mobile: 99419471
Fax no.: 26306198

MAPS: Available

ANNEX III

A List of Forms and Notices for BSE

BSE	1	Proforma for Receiving of Suspected Disease
BSE	2	Notice Declaring Infected Holding
BSE	3	Notice Imposing Emergency Restrictions
BSE	4	Submission of Diagnostic Samples
BSE	5	Veterinary Officer's Preliminary Report
BSE	6	Withdrawal of Notice Declaring Infected Holding
BSE	7	Animal Disease Notification
BSE	8	To the Occupier of an Infected Farm
BSE	9	Notice of Intention to Kill Susceptible Animals and Seizure for Destruction of Animal Products or other Material Believed to be Contaminated
BSE	10	Veterinary Officer's killing and disposal of animals form
BSE	11	Form for the Valuation of Seized Animal Products and other Materials
BSE	12	Destruction of Animals products
BSE	13	Form for the Valuation of Seized Animals
BSE	14	Certificate of Satisfactory Completion of Cleaning and Disinfection of the infected holding
BSE	15	Statement of animals killed
BSE	16	Outbreak History Sheet

B. List of forms and notices for Scrapie Disease

SCR	1	Notice to the owner
SCR	2	Seizing of animals
SCR	3	Notice to the owner for positive diagnosis
SCR	3a	Notice to the owner for high incidence
SCR	4	Licence for movement of animals
SCR	5	Disinfection of the infected holding
SCR	6	Distraction of seized animal products and other materials
SCR	7	Report of animal disease
SCR	8	Clinical signs of each seized animal
SCR	9	Monthly report of Scrapie activities
SCR	10	Valuation of seized animals
SCR	11	Form confirming Killing of killing and disposal of carcasses
SCR	12	Valuation of seized animals products and other materials
SCR	13	Distraction of seized animals and other materials
SCR	14	Certificate of the destruction of infected animals
SCR	15	Monthly report for the Enlightenment
SCR	16	Suggestion for compensation to the owner
SCR	17	Suggestion for not payment compensation
SCR	18, 19	Statement to the police officer

ANNEX IV

The Expert Group for TSE

Dr. George Neophytou

Dr. Pavlos Toumazos

Dr. Andreas Papaefstathiopu

Dr. Ramon Papadopoulos

Dr. P. Papasozomenos

Dr. Popi Stylianou

ANNEX V

Personnel Resources

1. Number of Staff who can be called upon in the event of a TSE outbreak

All 260 staff in the Government Veterinary Services (Veterinarians, Technicians and Administrative Staff) are trained in certain aspects at TSE Control.

2. Number of Veterinarians Trained / Experienced in TSE control

As it is seen in section VI adequate number of Veterinarian are involved in TSE related issues. Besides the rest of the staffs have experience on clinical signs of scrapie disease.

3. Number of staff able to operate in the field using another community language

There are 200 staff from the Veterinary and Technical grades who are fluent in at least one Community Language othe than Greek but there are others who are less able but could get by.

The Languages are:

English
German
Portugal
French

ANNEX VI

Training courses - Outlines

1. Veterinary Officer Background Course

A two weeks course for all new-entrant Veterinary Officers divided between the Central Veterinary Laboratory and the NDCC.

2. Epidemiology Courses

The staff of the LDCC's and other selected individuals attend an epidemiology course held at the Central Veterinary Laboratory and NDCC at Nicosia.

Courses are held as required to ensure adequate numbers of trained people in all parts of the country.