

CHAPTER 2.2.3.

EUROPEAN FOULBROOD OF HONEY BEES (INFECTION OF HONEY BEES WITH *MELISSOCOCCUS PLUTONIUS*)

SUMMARY

Description of the disease: *The causal organism of European foulbrood of honey bees is the bacterium *Melissococcus plutonius*. The identification of its presence by the observation of signs of disease in the field is unreliable. The most usual and obvious sign is the death of larvae shortly before they are due to be sealed in their cells, but this may be for reasons other than European foulbrood. Most infected colonies display few visible signs, which themselves often quickly abate spontaneously before the end of each active season. Infection remains enzootic within individual colonies because of mechanical contamination of the honeycombs by the durable organism. Recurrences of disease can therefore be expected in subsequent years. The disease is widely distributed worldwide and is an increasing problem in some areas.*

Identification of the agent: *Examination, by high-power microscopy, of suitable preparations of larval remains for the presence of lanceolate cocci is adequate for most practical purposes, especially when it is done by experienced individuals.*

Traditionally the diagnosis of European foulbrood is done by isolating and identifying the causative organism, which can be differentiated quite readily from all other bacteria associated with bees by its fastidious cultural requirements.

The isolated bacterium can be identified and differentiated by means of simple tube agglutination tests. A single-step conventional polymerase chain reaction (PCR) and a hemi-nested PCR are available. Real-time PCRs have also been developed. These methods permit direct analysis of larvae, adult bees and honey bee products.

Serological tests: *No tests for detecting antibodies in bees are available.*

Requirements for vaccines: *There are no vaccines available.*

A. INTRODUCTION

Bee larvae usually die of European foulbrood 1–2 days before being sealed in their cells, or sometimes shortly afterwards, and always before transformation to pupae. The disease is caused by *Melissococcus plutonius* and occurs mostly during the period when colonies are growing quickly. Most sick larvae become displaced from the coiled position in the bottom of their cells before they die. Many are quickly detected and removed by nurse bees, leaving empty cells scattered randomly among the remaining brood. Some infected larvae survive, successfully pupate and emerge as adults. These surviving larvae are able to defecate and their infected-faeces contribute to the continued propagation of the disease (Bailey, 1960).

Infected larvae that escape detection by adult bees and then die, first become flaccid and turn a light yellow colour that becomes increasingly brown, and at the same time they dissolve into a semi-liquid mass. They then become dry and form a dark brown scale that can easily be removed from the cells. Severely affected brood may have a very stale or sour odour, sometimes acidic, like vinegar, but often there is no smell.

Signs of disease usually disappear spontaneously from infected colonies before the end of the active season, but are likely to return in subsequent years (Bailey & Ball, 1991; Forsgren *et al.*, 2013). Geographically, the disease appears to vary in severity from being relatively benign in some areas but increasingly severe in others (Forsgren *et al.*, 2013).

1. Epizootiology and clinical signs

The general signs observed in a colony are irregular capping of the brood, capped and uncapped cells irregularly distributed over the brood frame (Figure 1). European foulbrood usually affects young larvae, which die while still coiled before they are sealed. The younger larvae affected cover the bottom of the cell and are almost transparent, with visible trachea. The colour of the larvae change from pearly white to yellow, and then brown (Figure 2). Larvae die at the age of 4 to 5 days rarely in capped cells. Infected larvae assume unnatural positions in the cells, twisted around the walls. The larvae eventually decay to a point where they form dry rubbery scales that can easily be removed from the cells. Severely affected brood may have a very stale or sour odour, sometimes acidic, like vinegar, but often there is no smell, depending on the presence of saprophytes. A late infestation with *Varroa*, before colony collapse, can produce a similar brood appearance and is an important differential diagnosis.

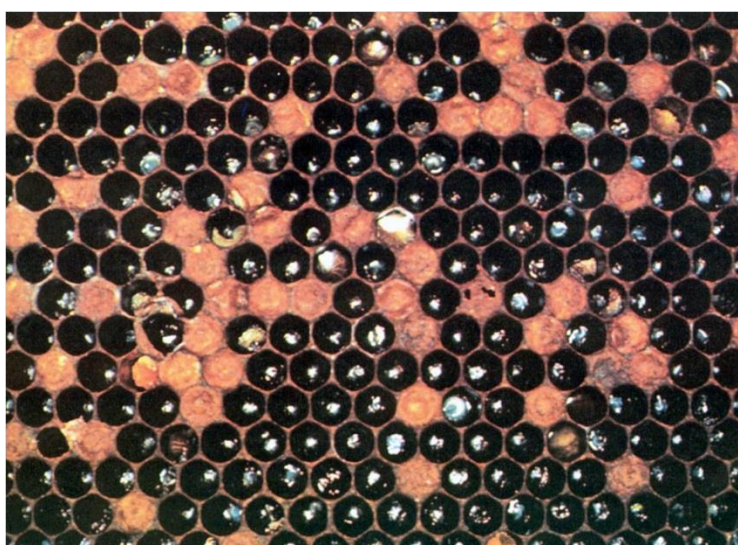


Fig. 1. Clinical European foulbrood: irregular capping of the brood. Photo by A.M. Alippi.



Fig. 2. The infected larvae became flaccid and turn from yellow to brown and finally transformed into a dark scale. Photo by A.M. Alippi.

B. DIAGNOSTIC TECHNIQUES

Table 1. Test methods available for the diagnosis of European foulbrood and their purpose

Method	Purpose					
	Population freedom from infection	Individual hive freedom from infection prior to movement	Contribute to eradication policies	Confirmation of clinical cases	Prevalence of infection – surveillance	Immune status in individual animals or populations post-vaccination
Agent identification¹						
Bacterial isolation	+++	+++	++	+++	+++	n/a
Antigen detection	++	++	++	++	++	n/a
Microscopy	++	++	++	+++	+++	n/a
PCR	+++	+++	+++	+++	+++	n/a
Real-time PCR	+++	+++	+++	+++	+++	n/a

Key: +++ = recommended method, validated for the purpose shown; ++ = suitable method but may need further validation; + = may be used in some situations, but cost, reliability, or other factors severely limits its application; – = not appropriate for this purpose; n/a = purpose not applicable. PCR = polymerase chain reaction.

1. Identification of the agent

Diagnosis of European foulbrood is based on the identification of the pathogenic agent and the presence of clinical signs. An initial overview of clinical signs of the disease is provided in this chapter, followed by identification methods that require a previous culturing step, or that can be performed directly on collected samples. The techniques involved are microbiological characterisation, the polymerase chain reaction (PCR), antibody-based techniques and microscopy. The analyst should be aware of differences in sensitivity between the presented approaches and should select the most appropriate for a given situation.

1.1. Microscopy

Freshly dead larvae are best for diagnosis. Before any decomposition occurs, diseased larvae can be smeared on a microscope slide or pulled apart by pinching the cuticle about the centre of the body with two pairs of forceps, which are then pulled apart. The mid gut contents are left exposed on the slide, still within the gelatinous, transparent peritrophic membrane. This is partially or almost completely filled with bacteria, which are easily seen as opaque chalk-white clumps. The contents of the mid-guts of healthy larvae, which are less easily dissected, have a golden-brown colour. Apparently healthy larvae may contain a mixture of bacteria and pollen. The mid-gut of healthy larvae that contain much light-coloured pollen may resemble those that are filled with bacteria.

For a bacteriological investigation, a loopful of a dilute aqueous suspension of the midgut contents is transferred to a clean microscope slide and mixed with a loopful of 5% aqueous nigrosin. This is spread over one or two square centimetres, dried gently over a flame, and examined directly by high-power microscopy. The presence of numerous lanceolate cocci, about $0.5 \times 1.0 \mu\text{m}$ in size, occurring either singly or in clusters, and arranged end to end in pairs or short chains, is almost certainly diagnostic of European foulbrood. Some very slender square-ended rod-like bacteria are also usually present (Figure 3). Similar preparations made from aqueous suspensions of whole dead or decomposing larvae are likely to present a confusing array of bacteria in which *M. plutonius* will be difficult to distinguish. Alternatively, diseased larvae can be smeared on a microscope slide and

¹ A combination of agent identification methods applied on the same clinical sample is recommended.

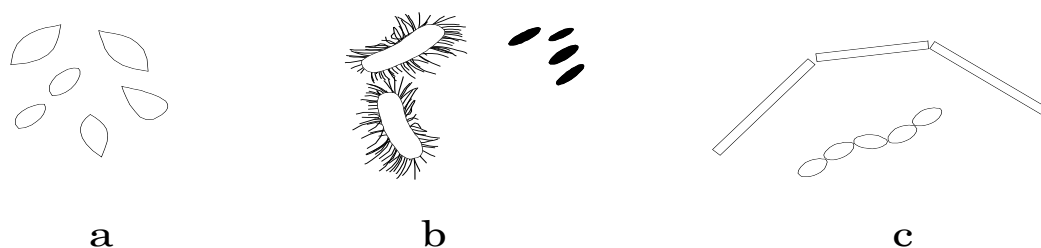


Fig. 3. Bacteria associated with European foulbrood.

- (a) *Melissococcus plutonius*: the cause of European foulbrood occurs singly, in longitudinal chains or in clusters. Morphologically resembles *Enterococcus faecalis*, a common secondary invader.
- (b) *Paenibacillus alvei*: vegetative rods $2.0\text{--}7.0 \times 0.8\text{--}1.2 \mu\text{m}$ with flagella; sporulating with spores lying adjacently. Both rods and spores are larger than those of *Paenibacillus* larvae (see American foulbrood).
- (c) *Achromobacter eurydice*: slender, square-ended rods in vivo but can form chains of cocci in vitro in certain media.

submitted to the laboratory (Hornitzky & Wilson, 1989). The smears are heat fixed by flaming the slide over a burner two or three times and flooded with 0.2% carbol fuchsin for 30 seconds. Wash off the stain and allow to dry or gently blot dry with absorbent paper before microscopic examination at $\times 1000$ (Forsgren *et al.*, 2013; Hornitzky & Wilson, 1989). Organisms are considered *M. plutonius* if they are lanceolate cocci, approximately $0.5 \times 1.0 \mu\text{m}$ in size, take up the stain evenly and no unstained area of the organism is detected (Figure 4). Spores are considered to be produced by the secondary invader *Paenibacillus alvei* if they are approximately $0.8 \times 2.0 \mu\text{m}$ in size, and only the spore walls stain with 0.2% carbol fuchsin (Hornitzky & Wilson, 1989) (Figure 5). Correct sampling of brood is important because even in the same brood frame, *M. plutonius* is mainly found in larvae with visual disease signs (Forsgren *et al.*, 2013).

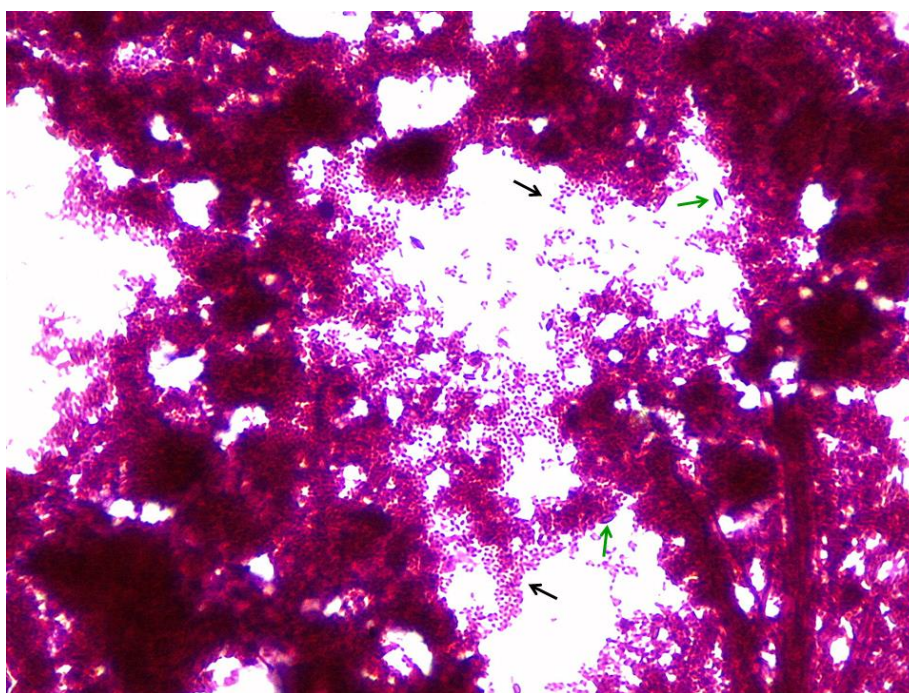


Fig. 4. Smear prepared from disease brood stained with carbol fuchsin. Black arrows indicate a mass of coccoid/lanceolate *Melissococcus plutonius* organism. Green arrows indicate the presence of spores of the secondary invader *Paenibacillus alvei*. Photo by A. M. Alippi.

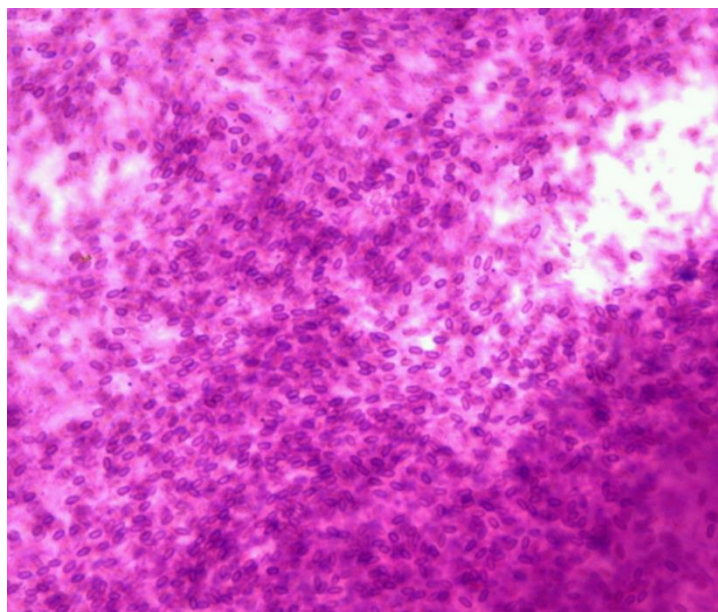


Fig. 5. *Paenibacillus alvei* spores in a smear prepared from disease brood stained with carbol fuchsin.
Photo by A.M. Alippi

1.2. Culture methods

Melissococcus plutonius (type strain NCIMB 702443) is the most abundant bacterium during the early stages of an infection (Bailey & Collins, 1982a, 1982b). *Melissococcus plutonius* can be cultivated on a medium (expressed in g/litre or ml/litre) comprising: yeast extract or certain peptones, 10; cysteine or cystine, 0.2–2.0; glucose or fructose, 10; soluble starch, 10; 1 M KH_2PO_4 , 100 at pH 6.6; and agar, 2 (Bailey & Collins, 1982a). M110 agar can also be used for isolation and cultivation of *M. plutonius* (Forsgren *et al.*, 2013). The medium is preferably autoclaved in 100 ml lots in screw-capped bottles at 116°C for 20 minutes and poured into Petri plates immediately before use. Optional: In order to prevent growth of secondary bacteria, filter-sterilised nalidixic acid (dissolved in 0.1 M NaOH may be added to a final concentration of 3 µg per ml after autoclaving) (Forsgren *et al.*, 2013). These plates are streaked with dilute aqueous suspensions of diseased larvae, or ideally, of diseased larval mid-gut. The latter can be prepared beforehand by allowing them to dry on a slide, which may then be kept for up to 18 months at 4°C or –20°C. All culture media should be subjected to quality control and must support the growth of *M. plutonius* from small inocula. The reference strain should also be cultured in parallel with the suspect samples to ensure that the tests are working correctly.

The preparation and storage of dried smears also eliminates most secondary organisms after a few weeks without affecting the viability of *M. plutonius*. This organism is isolated most efficiently by inoculating decimal dilutions of the aqueous suspension into agar that has been maintained molten at 45°C and which is then poured into plates. The plates must be incubated anaerobically, such as in McIntosh and Fildes jars in an atmosphere of approximately 5–10% carbon dioxide (CO_2) at 35°C. Small white opaque colonies of *M. plutonius* usually appear within 4 days. This bacterium is somewhat pleomorphic *in vitro*, often appearing in rod-like forms. The final pH of the medium may reach 5.5. Decreasingly fastidious strains become selected *in vitro*. Simplified or modified forms of the medium then support multiplication, especially of a serologically distinct *M. plutonius* group from Brazil (Allen & Ball, 1993) that will multiply on chemically defined media (Bailey, 1984). CO_2 remains essential. Inoculated slopes should be sealed when bacterial growth is apparent and may then be kept at 4°C for up to 6 months. Alternatively, the cultures can be suspended in a medium of 10% sucrose, 5% yeast extract and 0.1 M KH_2PO_4 , pH 6.6, and then lyophilised.

A number of other bacteria are often associated with and may be confused with *M. plutonius*. *Achromobacter eurydice* inhabits the alimentary tract of adult bees and occurs commonly in the gut of healthy larvae in small numbers. It is more numerous in larvae infected with *M. plutonius*. The incidence of *A. eurydice* in healthy bees is very low in winter and early spring, but it increases in summer. It forms thin square-ended rods, which can grow either singly or in chains. When grown in certain media, it sometimes resembles streptococci and has been confused with *M. plutonius*. However, its cultural characteristics closely resemble those of *Corynebacterium pyogenes* (Jones,

1975), and it multiplies poorly in the form of thin rods, under the conditions necessary for the cultivation of *M. plutonius*.

Enterococcus faecalis closely resembles *M. plutonius* morphologically and has often been confused with it, although they are both culturally and serologically distinct. Unlike *M. plutonius*, it does not remain viable for long when dried, or persist as mechanical contamination within bee colonies. It is probably brought into the hive by foraging adult bees, and is responsible for the sour smell sometimes encountered with European foulbrood.

Enterococcus faecalis grows well *in vitro* under the conditions suitable for *M. plutonius*, but it may be readily differentiated by its ability to grow aerobically. It forms small transparent colonies within 24 hours and is a facultative anaerobe. It multiplies on a variety of the more common media with or without carbohydrates or CO₂. The final pH in the presence of glucose is 4.0. *Enterococcus faecalis* rarely exceeds the number of *M. plutonius* in bee larvae, and can usually be diluted out. When it is not diluted out it produces sufficient acid to prevent the *in-vitro* multiplication of *M. plutonius*.

Enterococcus faecalis does not multiply in bee larvae in the absence of *M. plutonius*, so its presence in large numbers can be taken as presumptive evidence of European foulbrood.

Paenibacillus alvei is generally more common than *E. faecalis* in bee colonies affected with European foulbrood, but it is not invariably associated with the disease and so cannot act as a reliable indicator of it; indeed, *P. alvei* has been found in colonies affected by American foulbrood as mixed bacterial spore populations on larval remains. In bee colonies, *P. alvei* multiplies only in the decomposing remains of larvae, and then its spores often predominate over all other bacteria, even to their apparent exclusion. *Paenibacillus alvei* forms very resistant spores and becomes well established in bee colonies with enzootic European foulbrood. It causes a characteristic stale odour. *Paenibacillus alvei* multiplies poorly under the conditions necessary for the *in-vitro* growth of *M. plutonius*. It produces a spreading growth of transparent colonies, some of which are motile and move in arcs over the surface of the agar. Cultures have the characteristic stale odour that is associated with European foulbrood when the bacillus is present. Spores are formed rapidly.

1.3. Immunological methods

For the identification of *M. plutonius*, antisera can be prepared in rabbits against washed cultures of *M. plutonius* either by intravenous injections (Bailey & Gibbs, 1962) or by a single intramuscular injection of 1 ml of antigen suspension mixed with an equal volume of Freund's incomplete adjuvant.

Assays are made by agglutination tests in tubes containing suspensions of bacteria equivalent to 0.25 mg dry weight/ml. End-points are noted after tubes have been incubated for 4 hours at 37°C.

An enzyme-linked immunosorbent assay (ELISA) for confirmation of the presence of *M. plutonius* has been developed (Pinnock & Featherstone, 1983).

Recently, a commercially available lateral flow device for the detection of European foulbrood using monoclonal antibodies has been developed. It provides rapid confirmatory on-site diagnosis of European foulbrood infection in honeybee larvae in 10 minutes without the need for special equipment.

1.4. Polymerase chain reaction

Conventional PCR can be done on suspicious bacterial colonies transferred to and grown in liquid medium (Govan *et al.*, 1998). Genomic DNA is prepared according to standard methods (Wilson, 1990). Extraction of DNA using commercial kits according to the manufacturer's instructions is also suitable. Negative and positive controls should always be run in parallel with the test samples.

The DNA pellet is resuspended in 50 µl of 1 × TE buffer (10 mM Tris/HCl, pH 7.5; 1 mM EDTA [ethylene diamine tetra-acetic acid]). Approximately 1–3 µg of genomic DNA is amplified in a 50 µl reaction. The PCR reaction can also be done with larvae. Each larva is incubated individually in liquid medium overnight at 30°C in an anaerobic jar containing hydrogen plus 10% CO₂. Two millilitres of each sample is then centrifuged at 1000 *g* for 2 minutes, and the supernatant is centrifuged at 10,000 *g* for 5 minutes. The resultant pellet is resuspended in 100 µl of sterile H₂O and heated at 95°C for 15 minutes. One microlitre is amplified in a 50 µl PCR mixture. Besides template DNA this mixture also contains 2 mM MgCl₂, 50 pmol of forward (EFB-F) and reverse primer (EFB-R; primer sequences are given below) per µl, 25 mM (each) deoxynucleoside triphosphate and 1 U of *Taq* polymerase. Amplification of a specific DNA fragment occurs in a thermocycler under the following PCR

conditions: a 95°C (1 minute) step; 30 cycles of 93°C (1 minute), 55°C (30 seconds), and 72°C (1 minute); and a final cycle of 72°C (5 minutes).

When working with adult bees and/or honey samples commercial DNA extraction kits are recommended (Govan *et al.*, 1998).

A hemi-nested PCR was first developed by Djordjevic *et al.* (1998) and thereafter improved for sensitive detection of *M. plutonius* in honey, pollen, whole larvae and adult bees (McKee *et al.*, 2003). Here the first 50 µl reaction mixture contains 5–30 ng genomic DNA, 3 mM MgCl₂, 200 µM of each deoxyribonucleotide triphosphate, 100 ng of the primers MP1 and MP2, 5 µl of 10 × PCR buffer (100 mM Tris/HCl, pH 8.3; 15 mM MgCl₂; 500 mM KCl) and 1 U of *Taq* polymerase. Conditions of amplification consist of an initial denaturation cycle at 95°C for 2 minutes followed by 40 cycles of denaturation (95°C, 30 seconds), primer annealing (61°C, 15 seconds), primer extension (72°C, 1 minute) followed by an additional extension step of 5 minutes at 72°C. The third primer MP3 is used in conjunction with MP1 to amplify a DNA fragment from 1 µl of the primary PCR product obtained in the previous reaction. PCR conditions for the hemi-nested PCR are exactly as described above except that the MgCl₂ concentration is lowered to 1.5 mM and the annealing temperature to 56°C.

The molecular weights of the PCR products are determined by electrophoresis in a 1.0–1.5 % agarose gel and staining with ethidium bromide.

A highly specific duplex PCR that can detect *M. plutonius* directly from diseased larvae was developed by Arai *et al.* (2014). It can differentiate strains that grow readily in culture from those with fastidious cultural requirements.

Real-time PCR methods have been developed and validated (Forsgren *et al.*, 2013; Roetschi *et al.*, 2008). They show improved sensitivity and specificity.

Ref.	Name	Sequence	PCR-product size
Govan <i>et al.</i> , 1998	Primer 1	5'-GAA-GAG-GAG-TTA-AAA-GGC-GC-3'	831 bp
	Primer 2	5'-TTA-TCT-CTA-AGG-CGT-TCA-AAG-G-3'	
Djordjevic <i>et al.</i> , 1998; McKee <i>et al.</i> , 2003	MP1	5'-CTT-TGA-ACG-CCT-TAG-AGA-3'	486 bp 276 bp
	MP2	5'-ATC-ATC-TGT-CCC-ACC-TTA-3'	
	MP3	5'-TTA-ACC-TCG-CGG-TCT-TGC-GTC-TCT-C-3'	
Roetschi <i>et al.</i> , 2008	MelissoF	5'-CAG-CTA-GTC-GGT-TTG-GTT-CC-3'	79 bp
	MelissoR	5'-TTG-GCT-GTA-GAT-AGA-ATT-GAC-AAT-3'	
	Probe	6'-FAM-CTT-GGT-TGG-TCG-TTG-ACMBGNFQ-3'	
Budge <i>et al.</i> , 2010	EFBFor	5'-TGT-TGT-TAG-AGA-AGA-ATA-GGG-GAA-3'	69 bp
	EFBRev2	5'-CGT-GGC-TTT-CTG-GTT-AGA-3'	
	Probe	5'-FAM-AGA-GTA-ACT-GTT-TTC-CTC-GTG-ACG-GT-TAMRA-3'	

2. Serological tests

No tests for detecting antibodies in bees are available.

C. REQUIREMENTS FOR VACCINES

There are no vaccines available.

ACKNOWLEDGMENT

Illustrations by Karl Weiss, extracted from Bienen-Pathologie, 1984. Reproduced with the kind permission of the author and Ehrenwirth-Verlag, Munich (Germany).

REFERENCES

- ALLEN M.F. & BALL B.V. (1993). The cultural characteristics and serological relationships of isolates of *Melissococcus pluton*. *J. Apic. Res.*, **32**, 80–88.
- ARAI R., MIYOSHI-AKIYAMA T., OKUMURA K., MORINAGA Y., WU M., SUGIMURA Y., YOSHIYAMA M., OKURA M., KIRIKAE T. & TAKAMATSU D. (2014). Development of duplex PCR assay for detection and differentiation of typical and atypical *Melissococcus plutonius* strains. *J. Vet. Med. Sci.*, **76**, 491–498.
- BAILEY L. (1960). The epizootiology of European foulbrood of the larval honey bee, *Apis mellifera* Linnaeus. *J. Insect Pathol.*, **2**, 67–83.
- BAILEY L. (1984). A strain of *Melissococcus pluton* cultivable on chemically defined media. *FEMS Microbiol. Lett.*, **25**, 139–141.
- BAILEY L. & BALL B.V. (1991). Honey Bee Pathology. Academic Press, London, UK, and New York, USA.
- BAILEY L. & COLLINS M.D. (1982a). Taxonomic studies on *Streptococcus pluton*. *J. Appl. Bacteriol.*, **53**, 209–213.
- BAILEY L. & COLLINS M.D. (1982b). Reclassification of *Streptococcus pluton* (White) in a new genus *Melissococcus*, as *Melissococcus pluton* nom. rev.; Comb. nov. *J. Appl. Bacteriol.*, **53**, 215–217.
- BAILEY L. & GIBBS A.J. (1962). Cultural characters of *Streptococcus pluton* and its differentiation from associated enterococci. *J. Gen. Microbiol.*, **28**, 385–391.
- BUDGE G.E., BARRETT B., JONES B., PIETRAVALLE S., MARRIS G., CHANTAWANNAKUL P., THWAITES R., HALL J., CUTHBERTSON A.G.S. & BROWN M.A. (2010). The occurrence of *Melissococcus plutonius* in healthy colonies of *Apis mellifera* and the efficacy of European foulbrood control measures. *J. Invertebr. Pathol.*, **105**, 164–170. <http://dx.doi.org/10.1016/j.jip.2010.06.004>
- DJORDJEVIC S.P., NOONE K., SMITH L. & HORNITZKY M.A.Z. (1998). Development of a semi-nested PCR assay for the specific detection of *Melissococcus pluton*. *J. Apic. Res.*, **37**, 165–174.
- FORSQREN E., BUDGE G.E., CHARRIERE J.-D. & HORNITZKY M.A.Z. (2013). Standard methods for European foulbrood research. *J. Apic. Res.*, **52** (1) 1–14. DOI 10.3896/IBRA.1.52.1.12.
- GOVAN V.A., BROZEL V., ALLSOPP M.H. & DAVISON S. (1998). A PCR detection method for rapid identification of *Melissococcus pluton* in honeybee larvae. *Appl. Environ. Microbiol.*, **64**, 1983–1985.
- HORNITZKY M.A.Z. & WILSON S.C. (1989). A system for the diagnosis of the major bacterial brood diseases of honeybees. *J. Apic. Res.*, **28**, 191–195.
- JONES D. (1975). A numerical taxonomic study of Coryneform and related bacteria. *J. Gen. Microbiol.*, **87**, 52–96.
- MCKEE B.A., DJORDJEVIC S.P., GOODMAN R.D. & HORNITZKY M.A. (2003). The detection of *Melissococcus pluton* in honey bees (*Apis mellifera*) and their products using a hemi-nested PCR. *Apidologie*, **34**, 19–27.
- PINNOCK D.E. & FEATHERSTONE N.E. (1984). Detection and quantification of *Melissococcus pluton* infection in honeybee colonies by means of enzyme-linked immunosorbent assay. *J. Apic. Res.*, **23**, 168–170.
- ROETSCHI A., BERTHOUD H., KUHN R. & IMDORF A. (2008). Infection rate based on quantitative real-time PCR of *Melissococcus plutonius*, the causal agent of European foulbrood, in honeybee colonies before and after apiary sanitation. *Apidologie*, **39**, 362–371.
- WILSON K. (1990). Preparation of genomic DNA from bacteria. In: Current Protocols in Molecular Biology, Ausubel F.M., Brent R., Kingston R.E., Moore D.D., Smith J.A., Seidman J.G. & Struhl K., eds. Greene Publishing Association and Wiley Interscience, New York, USA, 241–245.

*

* *

NB: There are OIE Reference Laboratories for Bee diseases

(see Table in Part 4 of this *Terrestrial Manual* or consult the OIE Web site for the most up-to-date list:

<http://www.oie.int/en/our-scientific-expertise/reference-laboratories/list-of-laboratories/>).

Please contact the OIE Reference Laboratories for any further information on diagnostic tests and reagents for bee diseases