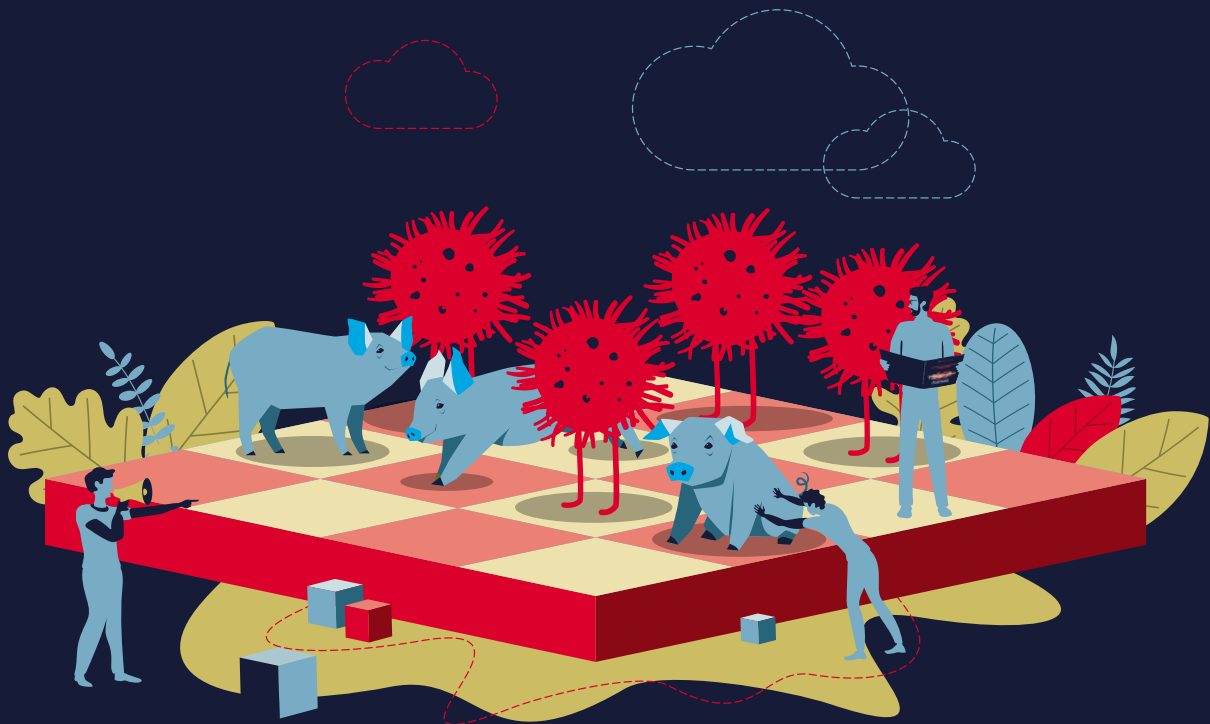




WORLD ORGANISATION FOR ANIMAL HEALTH
Protecting animals, preserving our future

Compartmentalisation Guidelines



AFRICAN SWINE FEVER

Biosecurity checklist

EXPECTED OUTCOMES	DESCRIPTION OF MEASURES TO BE IMPLEMENTED	TRAINING (Y/N/NA)	PROTOCOL (Y/N/NA)	COMPLIANCE (Y/N/NA)	REMARKS
Input control					
<p>▶ Preventing the introduction of African swine fever virus (ASFV) into the compartment</p>	Measures to ensure that ASFV is not introduced into the compartment through swill feeding, in accordance with Article 15.1.22. of the <i>Terrestrial Code</i>				
	Measures to ensure that feed inputs are not contaminated with ASFV before storage (e.g. Good Management Practice approved)				
	Measures to prevent feed contamination with ASFV during storage in the compartment				
	Measures to ensure that bedding is not contaminated with ASFV during storage in the compartment				
	Measures to ensure an ASFV-free water source				
	Measures to ensure that live pig inputs are sourced from safe ASFV-free sources				
	Measures to ensure that other relevant inputs are from ASF-free sources and that proper storage and delivery procedures are followed				
Transportation and vehicles					
<p>▶ Preventing the introduction of ASFV into the compartment</p> <p>▶ Preventing cross-contamination of pigs and pig products</p>	Proper cleaning and disinfection of pig transport trucks between each use				
	Measures to ensure that transport vehicles are not contaminated during cleaning and disinfection				
	Measures to ensure that pigs are not exposed to ASFV during loading and unloading				
	Measures to ensure that only on-farm vehicles transport visitors within compartment premises				

EXPECTED OUTCOMES	DESCRIPTION OF MEASURES TO BE IMPLEMENTED	TRAINING (Y/N/NA)	PROTOCOL (Y/N/NA)	COMPLIANCE (Y/N/NA)	REMARKS
Location, layout and structure of premises					
<ul style="list-style-type: none"> ▶ Ensuring segregation/separation ▶ Preventing the introduction of ASFV into the compartment 	<p>Measures to ensure that components within the compartment are located, designed and constructed in such a way as to prevent ASFV introduction or establishment</p>				
<ul style="list-style-type: none"> ▶ Preventing the establishment of ASFV in compartment components ▶ Reducing the impact in the event of an ASFV incursion ▶ Speeding up recovery of compartment status after an ASFV incursion ▶ Preventing cross-contamination among workers, equipment, etc. ▶ Preventing the spread of ASFV after an incursion 	<p>Measures to ensure that barns within compartment premises are adequately spaced, depending on the pig sub-population, and that the compartment possesses an appropriate quarantine or isolation facility</p>				
Internal biosecurity					
<ul style="list-style-type: none"> ▶ Preventing the establishment of ASFV in compartment components 	<p>Measures to ensure that compartment staff are trained in all protocols and standard operating procedures (SOPs)</p>				
<ul style="list-style-type: none"> ▶ Preventing ASFV cross-contamination between different compartment components ▶ Preventing the spread of ASFV among the pig sub-population after an ASFV incursion 	<p>Measures to ensure that compartment components do not become contaminated by ensuring adequate cleaning and disinfection of compartment components and functional units or sub-units, using validated disinfectants</p>				
<ul style="list-style-type: none"> ▶ Reducing the impact of an ASFV incursion into the compartment ▶ Increasing market access for the compartment ▶ Speeding up recovery of compartment status after an ASFV incursion 	<p>Measures to prevent cross-contamination of facilities, equipment or personnel within the compartment via staff/personnel movements within the compartment</p>				

EXPECTED OUTCOMES	DESCRIPTION OF MEASURES TO BE IMPLEMENTED	TRAINING (Y/N/NA)	PROTOCOL (Y/N/NA)	COMPLIANCE (Y/N/NA)	REMARKS
	Measures to prevent cross-contamination with ASFV through sharing equipment and movements within the compartment				
	Measures to assess any risk of ASFV from visitors or staff due to contact with risk agents outside the compartment				
	Measures to ensure that, before any staff come into contact with any animal, they 'scrub up' and change into clean clothes, or equivalent measures				
	Measures to ensure that different groups of pigs within the compartment are properly managed, with appropriate separation of personnel and equipment or equivalent				
	Measures to ensure that an appropriate surveillance system for ASF is in place for the animal sub-population in the compartment				

Output control

▶ Preventing cross-contamination/ infection of pigs and pig products with ASFV	Measures to prevent cross-contamination and facilitate safe trade through controlled movement, identification and traceability of pigs and pig products				
▶ Facilitating safe trade of pigs and pig products	Measures to prevent cross-contamination during transportation of pigs and relevant commodities				
	Measures to manage sludge and biological waste in areas within and outside the compartment, including all functional units or sub-units				
	Measures to prevent cross-contamination of pigs and relevant commodities during cutting, slaughtering and processing procedures				

EXPECTED OUTCOMES	DESCRIPTION OF MEASURES TO BE IMPLEMENTED	TRAINING (Y/N/NA)	PROTOCOL (Y/N/NA)	COMPLIANCE (Y/N/NA)	REMARKS
Cleaning and disinfection					
<ul style="list-style-type: none"> ▶ Preventing the establishment of ASFV in compartment components ▶ Reducing the impact of ASFV incursion into the compartment ▶ Speeding up recovery of compartment status after an ASFV incursion ▶ Increasing market access for the compartment ▶ Preventing cross-contamination/ infection of equipment and pigs 	<p>Measures to ensure thorough cleaning of holding-pen floors between batches of pigs, easily cleaned and disinfected equipment and appropriate use of disinfectants</p>				
Traceability and supply handling					
<ul style="list-style-type: none"> ▶ Preventing the introduction of ASFV into the compartment ▶ Preventing cross-contamination of inputs/outputs with ASFV 	<p>Measures to ensure accurate identification of pigs and relevant commodities to ensure that they originated from the compartment system</p>				
<ul style="list-style-type: none"> ▶ Facilitating safe trade of pigs and pig products 	<p>Measures to ensure good-quality control practices for entry supplies</p>				
	<p>Proper monitoring of the transport/ delivery of live pigs and relevant commodities between the compartment and slaughterhouse and/or storage</p>				
	<p>Appropriate measures in the slaughterhouse, cutting and processing facilities to ensure that pork and other relevant products are ASFV-free</p>				

EXPECTED OUTCOMES	DESCRIPTION OF MEASURES TO BE IMPLEMENTED	TRAINING (Y/N/NA)	PROTOCOL (Y/N/NA)	COMPLIANCE (Y/N/NA)	REMARKS
Staff					
<ul style="list-style-type: none"> ▶ Preventing the introduction of ASFV into compartment components ▶ Preventing cross-contamination with ASFV between different components of the compartment 	Measures to ensure that staff are trained in the biosecurity measures needed to prevent ASFV introduction or cross-contamination and ensure that follow-up appraisals demonstrate their understanding of the biosecurity protocols and any updates or changes				
	Measures to ensure detailed documentation of the biosecurity training, with tests that are validated and documented				
Visitor access control					
<ul style="list-style-type: none"> ▶ Preventing the introduction of ASFV into the compartment 	Measures to ensure limited and controlled entry to the compartment premises and other functional units or sub-units				
	Measures to keep visitor/personnel traffic to a minimum in the compartment				
	Measures to ensure visitor compliance with the biosecurity policy of the compartment				
	Measures to ensure that staff follow the protocols for loading and unloading live pigs, feed and other inputs				
	Appropriate measures to maintain physical separation between wild/free-ranging pigs and other livestock and pigs within the compartment				
	Measures to minimise attractants of birds, rodents, wild and free-ranging pigs to the compartment perimeter				

EXPECTED OUTCOMES	DESCRIPTION OF MEASURES TO BE IMPLEMENTED	TRAINING (Y/N/NA)	PROTOCOL (Y/N/NA)	COMPLIANCE (Y/N/NA)	REMARKS
Documentation					
▶ Ensuring traceability for both inbound and outbound animals and animal products, or relevant inputs	Measures to ensure that information on visitors and vehicles entering the compartment is recorded				
▶ Increasing market access for the compartment	Measures to ensure identification and traceability of pigs and pig products into, within and from the compartment, including for relevant inputs such as feed.				
▶ Minimising the impact of ASFV incursion into the compartment					
▶ Speeding up compartment status recovery after an ASFV incursion	Measures to ensure that the compartment's supply chain and actors offer quality assurance with regard to ASFV contamination and/or infection				
▶ Preventing cross-contamination of inbound and outbound animals and animal products	Measures to ensure good record-keeping in relation to all new pig introductions				
Production performance					
	Measures to ensure daily examination of the general health status of the pig sub-population within the compartment. Feed consumption changes may be used as an indicator of changes in health status				
▶ Increasing market access for the compartment	Measures to ensure that ASFV spread is prevented by conducting post-mortem examinations of all mortalities resulting from non-readily identifiable causes (e.g. crushing of a neonatal pig)				
▶ Complying with national biosecurity protocols					
▶ Preventing the spread of ASFV in pigs					
	Measures to ensure good medical records are kept, e.g. vaccination records and the incidence of diseases other than ASF				
	Measures to ensure that rapid detection surveillance of the compartment is operational				

EXPECTED OUTCOMES	DESCRIPTION OF MEASURES TO BE IMPLEMENTED	TRAINING (Y/N/NA)	PROTOCOL (Y/N/NA)	COMPLIANCE (Y/N/NA)	REMARKS
Quarantine or new introductions					
▶ Preventing the introduction of ASFV into the compartment	Measures to ensure appropriate frequency of the introduction of new pigs into the compartment				
▶ Speeding up the recovery of compartment status after an ASFV incursion	Measures to minimise ASFV risk from the introduction of new pigs by examining herd-health history/ records before purchasing new pigs				
	Measures to ensure that live pig inputs are healthy with up-to-date health certification				
	Measures to ensure the appropriate location of an adequately equipped quarantine and isolation facility away from other holding pens				
	Measures to ensure secure and appropriate quarantine procedures for new pig introductions				
	Measures to ensure that quarantine staff movements and sharing of equipment between quarantine/ isolation facilities and other units are avoided				
	Measures for testing pigs in quarantine facilities before they are introduced into other pig sub-populations in the compartment				
	Measures to ensure regular monitoring of isolated and quarantined pigs				